



**ADA Compliant**

**EVERSTEEL™**



This Space for Architect/Engineer Approval

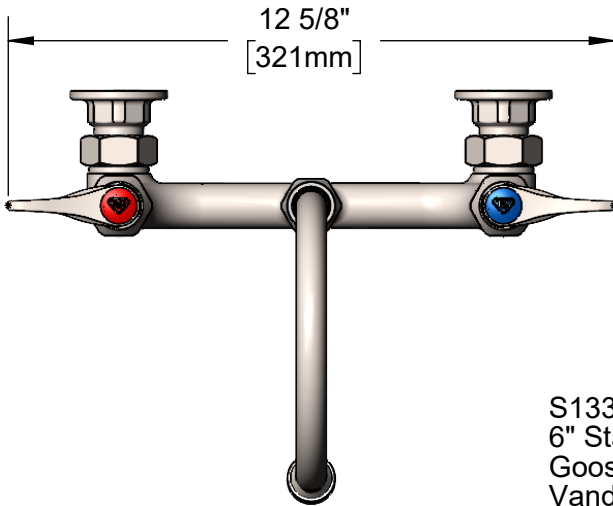
Job Name \_\_\_\_\_ Date \_\_\_\_\_

Model Specified \_\_\_\_\_ Quantity \_\_\_\_\_

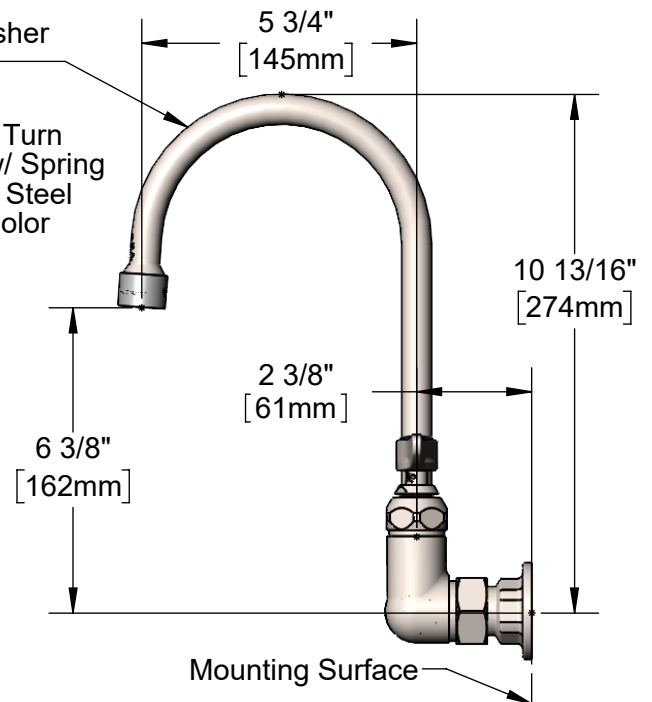
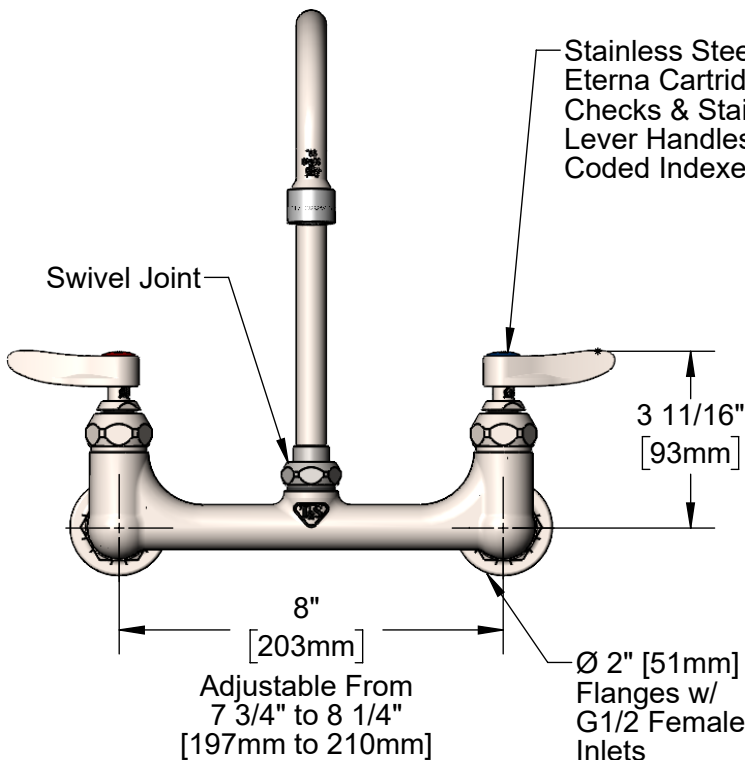
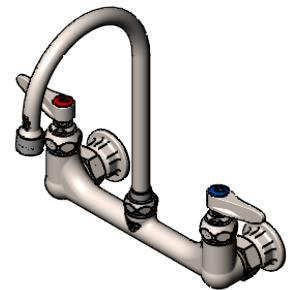
Customer/Wholesaler \_\_\_\_\_

Contractor \_\_\_\_\_

Architect/Engineer \_\_\_\_\_



**S133X-V20**  
6" Stainless Steel Swivel  
Gooseneck w/ 2.0 GPM  
Vandal Resistant Aerator.  
Converts to Rigid w/  
014200-45 Lock Washer  
(Included)



**015425-45**  
**Vandal Resistant Key**  
(Included)

**Product Specifications:**

8" Stainless Steel Wall Mount Mixing Faucet, Stainless Steel Full Turn Eterna Cartridges w/ Spring Checks, Stainless Steel Lever Handles, 6" Stainless Steel Swivel/Rigid Gooseneck w/ 2.0 GPM VR Aerator & G1/2 Female Inlets

**Product Compliance:**

ASME A112.18.1 / CSA B125.1  
NSF 61 - Section 9  
NSF 372 (Low Lead Content)  
ANSI A117.1 (ADA)  
AS/NZ WaterMark / WELS



**Reward  
Hospitality**

www.rewardhospitality.com.au

**T&S BRASS AND BRONZE WORKS, INC.**

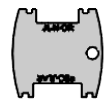
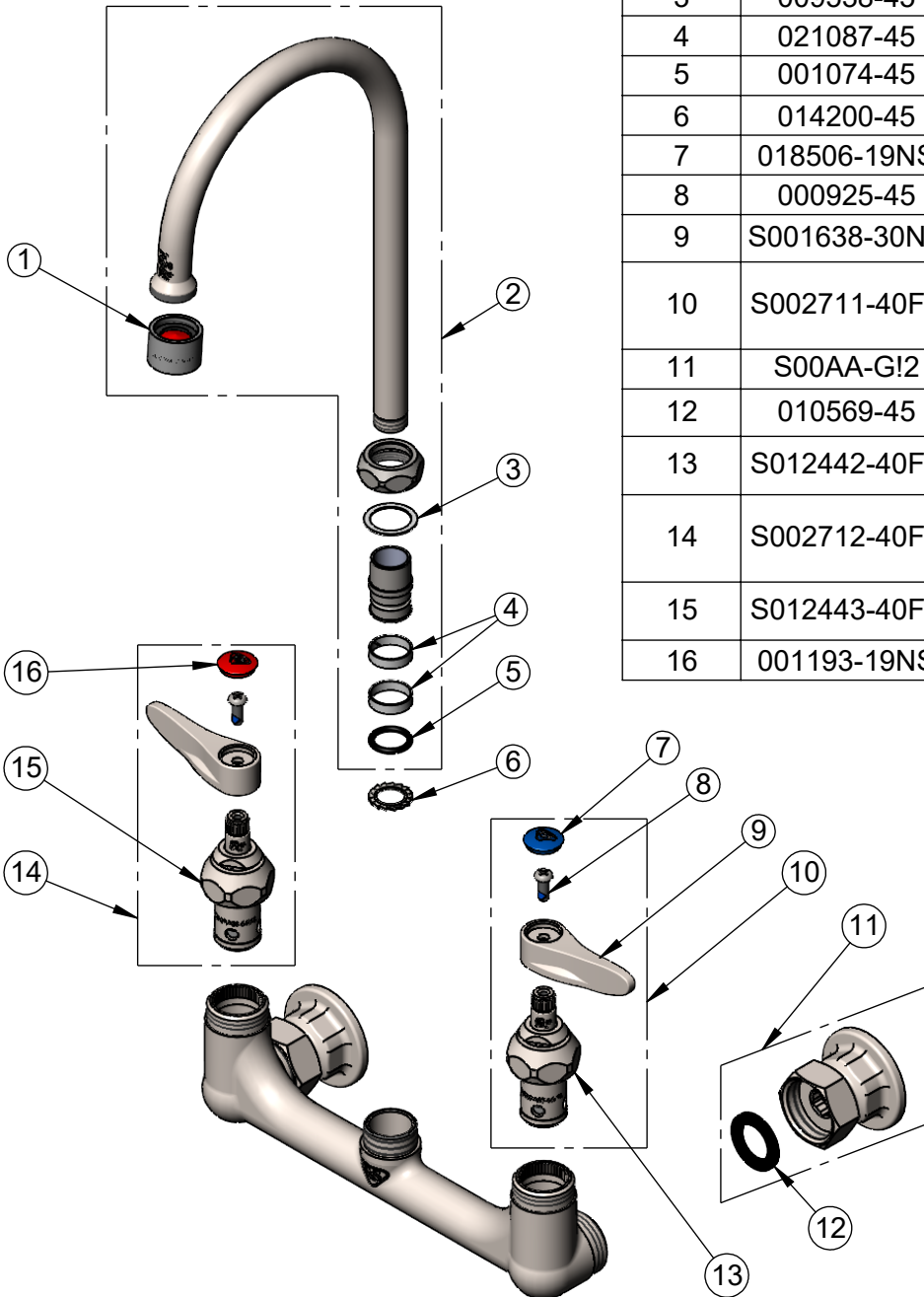
Model No.

**AS-0331-V20-G**

Item No.

4710002

ITEM NO.	SALES NO.	DESCRIPTION
1	S-0199-06-F20	VR 2.0 GPM Aerator, 55/64-27 Female w/ Key
2	S133X-V20	Stainless Steel 6" Swivel Gooseneck w/ 2.0 GPM VR Aerator
3	009538-45	Swivel Washer
4	021087-45	Swivel Sleeves (2)
5	001074-45	O-Ring
6	014200-45	Star Washer, Anti-Rotation
7	018506-19NS	Blue Button Index, Press-in
8	000925-45	Lab Handle Screw
9	S001638-30NS	Lever Handle (New Style)
10	S002711-40FT	Stainless Steel Full Turn Eterna Cartridge w/ Spring Check, Handle, Blue Index & Screw, LTC
11	S00AA-G1/2	G1/2 Female Eccentric SS Flange
12	010569-45	Washer, Inlet Flange Coupling (UK)
13	S012442-40FT	Stainless Steel Full Turn Eterna Cartridge w/ Spring Check, LTC
14	S002712-40FT	Stainless Steel Full Turn Eterna Cartridge w/ Spring Check, Handle, Red Index & Screw, RTC
15	S012443-40FT	Stainless Steel Full Turn Eterna Cartridge w/ Spring Check, RTC
16	001193-19NS	Red Button Index, Press-in



015425-45  
Vandal Resistant Key  
(Included)

**Product Specifications:**

8" Stainless Steel Wall Mount Mixing Faucet, Stainless Steel Full Turn Eterna Cartridges w/ Spring Checks, Stainless Steel Lever Handles, 6" Stainless Steel Swivel/Rigid Gooseneck w/ 2.0 GPM VR Aerator & G1/2 Female Inlets

**Product Compliance:**

ASME A112.18.1 / CSA B125.1  
NSF 61 - Section 9  
NSF 372 (Low Lead Content)  
ANSI A117.1 (ADA)  
AS/NZ WaterMark / WELS